

TRM 885

Experience Series®

Treadmill

Product Highlights

The TRM 885 adds value to your facility by combining essential reliability and ease of use with a feeling that's personalised to every step. Thoughtful design and performance deliver an exerciser experience that feels natural. The TRM 885 makes it easier for you to provide a customer-focused environment. Quiet and efficient, we've streamlined the assembly, and included diagnostic tools to increase uptime and to keep operating costs down.

Product Features

1. P82 Console

The P82 console not only offers a brilliant 15" screen that's ergonomically positioned to deliver crystal-clear entertainment viewing for exercisers in motion, but when networked, is also a direct-to-exerciser communication portal allowing you an opportunity to build your brand, share information about activities and services, and strengthen the sense of community within your facility.

2. Power Factor Correction (PFC)

The 4 HP high-efficiency AC-motor drive (8 HP peak) is optimised with PFC for increased efficiency, improved performance, and reduced energy consumption by up to 30%.

3. Integrated Footplant Technology

Integrated Footplant Technology recognises the exerciser's natural foot speed and matches every stride for an ultra-smooth feel that enhances the workout experience.

4. Ground Effects® Impact Control System

This patented GFX system combines ideal cushioning, support, and stability for exercisers. Precor treadmill decks are designed to absorb more impact in the front where exercisers' feet hit the belt. Added rigidity at the back of the belt allows for a firm push-off.

5. Active Status Light

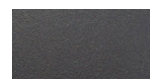
To increase uptime, an external status light lets you and your staff know at a glance the operating condition of your treadmill and when to perform life-extending maintenance.



Refined colourways with dark Tungsten covers and two frame colour options, Black Pearl and Storm Grey.



Black Pearl



Storm Grey

Specifications

Dimensions (L x W x H): 83 x 35 x 68.5 in / 211 x 89 x 174 cm

Equipment Weight: 430 lb / 195 kg

Power: 220/240 volt

Applicable country-specific power cord is supported*

Total Workouts: 27

Motor Drive: 4 high-efficiency AC-motor (8 HP peak)

Speed Range: 0.5-16 mph / 0.8-25.5 km/h

Elevation Range: - 3% to 15% incline in 0.5% increments

Language: English, Danish, Dutch, French, Finnish, German, Italian, Japanese, Korean, Norwegian, Polish, Portuguese, Russian, Simplified Chinese, Spanish, Swedish, Traditional Chinese, Turkish

Network Capabilities: Preva® network capable

Console Features: 15 in / 38.1 cm LCD Capacitive Touch Screen with mobile device charger and audio jack

Accessories: Integrated Reading Rack, Accessories Holder
Optional - Cable Management

Warranty: Visit www.precor.com for warranty terms.

* Contact your local Precor representative for further information