

# TRM 835

## Experience Series®

# Treadmill

### Product Highlights

The TRM 835 combines thoughtful design and performance to deliver an exerciser experience that feels right. The TRM 835 makes it easier for you to provide a customer-focused environment. Quiet and efficient, the streamlined assembly includes diagnostic tools to increase uptime and keep operating costs down.

### Product Features

#### 1. P31 Console

Finally, an LED console that works harder for you, your onsite team and your exercisers. Get integrated asset management to maximise equipment uptime through smart servicing at your fingertips. Well-positioned controls provide ease of use for exercisers to enjoy their workout.

#### 2. Power Factor Correction (PFC)

The 4 HP high-efficiency AC-motor drive (8 HP peak) is optimised with PFC for increased efficiency, improved performance, and reduced energy consumption by up to 30%.

#### 3. Integrated Footplant Technology

Integrated Footplant Technology recognises the exerciser's natural foot speed and matches every stride for an ultra-smooth feel that enhances the workout experience.

#### 4. Ground Effects® Impact Control System

This patented GFX system combines ideal cushioning, support, and stability for exercisers. Precor treadmill decks are designed to absorb more impact in the front where exercisers' feet hit the belt. Added rigidity at the back of the belt allows for a firm push-off.

#### 5. Active Status Light

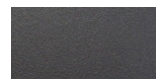
To increase uptime, an external status light lets you and your staff know at a glance the operating condition of your treadmill and when to perform life-extending maintenance.



Refined colourways with dark Tungsten covers and two frame colour options, Black Pearl and Storm Grey.



Black Pearl



Storm Grey



### Specifications

**Dimensions (L x W x H):** 83 x 35 x 62 in / 211 x 89 x 157.5 cm

**Equipment Weight:** 420 lb / 190 kg

**Power:** 220/240 volt, individual branch circuit required  
Applicable country-specific power cord is supported\*

**Total Workouts:** 27

**Motor Drive:** 4 HP high-efficiency AC-motor (8 HP peak)

**Speed Range:** 0.5-16 mph / 0.8-25.5 km/h

**Elevation Range:** -3% to 15% incline in 0.5% increments

**Language:** English, French, German, Italian, Japanese, Portuguese, Russian, Spanish

**Network Capabilities:** C-SAFE enabled  
Mobile Device Charger - Standard

**Entertainment:** Optional - 15 in / 38.1 cm Personal Viewing System (PVS)  
Optional - TV Audio Receiver

**Accessories:** Integrated Reading Rack  
Optional - Cable Management

**Warranty:** Visit [www.precor.com](http://www.precor.com) for warranty terms.

\* Contact your local Precor representative for further information