

# TRM 781

## Experience Series®

# Treadmill

### Product Highlights

The TRM 781 combines essential reliability and ease-of-use with touch screen technology at a value just right for you. This treadmill is designed to optimise performance and maintenance while providing a comfortable and effective workout for your exercisers. The simple, clean design holds up under heavy commercial use, ensuring your investment will last into the future.

### Product Features

#### 1. P82 Console

The P82 console not only offers a brilliant 15" screen that's ergonomically positioned to deliver crystal-clear entertainment viewing for exercisers in motion, but when networked is also a direct-to-exerciser communication portal allowing you an opportunity to build your brand, share information about activities and services, and strengthen the sense of community within your facility.

#### 2. Motor Drive System

The 4 HP high-efficiency AC-motor drive (8 HP peak) improves performance, efficiency, and reliability through improved internal cooling, a wider operating range, and unique input current averaging to identify more precisely when a running belt requires replacement.

#### 3. Integrated Footplant Technology

Recognises exercisers' natural foot speeds and matches every stride for an ultra-smooth feel that enhances their workout experience.

#### 4. Ground Effects® Impact Control System

Our patented GFX system combines ideal cushioning, support, and stability for exercisers. Precor decks are designed to provide more absorption in the front where exercisers' feet hit the belt and added rigidity at the back for a firm push-off.

#### 5. Active Status Light

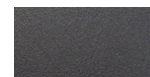
To increase uptime, an external status light lets you and your staff know at a glance the operating condition of your treadmill and when to perform life-extending maintenance.



Refined colourways with dark Tungsten covers and two frame colour options, Black Pearl and Storm Grey.



Black Pearl



Storm Grey

### Specifications

**Dimensions (L x W x H):** 83 x 35 x 68.5 in / 211 x 89 x 174 cm

**Equipment Weight:** 412 lb / 187 kg

**Step-Up Height:** 9.5 in / 24 cm

**Handrail length** 18 in / 46 cm

**Running surface:** 60 x 22 in / 153 x 56 cm

**Power:** 220/240 volt, individual branch circuit required  
Applicable country-specific power cord is supported\*

**Total Workouts:** 27

**Elevation Range:** 0% to 15% incline in 0.5% increments

**Speed Range:** 0.5-12 mph / 0.8-19.2 km/h

**Motor Drive:** 4 high-efficiency AC-motor (8 HP peak)

**Language:** English, Danish, Dutch, French, Finnish, German, Italian, Japanese, Korean, Norwegian, Polish, Portuguese, Russian, Simplified Chinese, Spanish, Swedish, Traditional Chinese, Turkish

**Network Capabilities:** Preva® network capable

**Console Features:** 15 in / 38.1 cm LCD Capacitive Touch Screen with mobile device charger and audio jack

**Accessories:** Integrated Reading Rack  
Optional - Cable Management

**Warranty:** Visit [www.precor.com](http://www.precor.com) for warranty terms.

\* Contact your local Precor representative for further information