

TRM 761

Experience Series®

Treadmill

Product Highlights

The TRM 761 combines essential reliability and ease-of-use with touch screen technology at a value just right for you. This treadmill is designed to optimise performance and maintenance while providing a comfortable and effective workout for your exercisers. The simple, clean design holds up under heavy commercial use, ensuring your investment will last into the future.

Product Features

1. P62 Console

The P62 console features personalised viewing and the remarkable clarity of TV and internet options that exercisers crave, all in a 10" screen. With the ability to mark selections as "favourite" for the future, exercisers can customise their workout experience based on what is important to them.

2. Motor Drive System

The 4 HP high-efficiency AC-motor drive (8 HP peak) improves performance, efficiency, and reliability through improved internal cooling, a wider operating range, and unique input current averaging to identify more precisely when a running belt requires replacement.

3. Integrated Footplant Technology

Recognises exercisers' natural foot speeds and matches every stride for an ultra-smooth feel that enhances their workout experience.

4. Ground Effects® Impact Control System

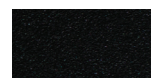
Our patented GFX system combines ideal cushioning, support, and stability for exercisers. Precor decks are designed to provide more absorption in the front where exercisers' feet hit the belt and added rigidity at the back for a firm push-off.

5. Active Status Light

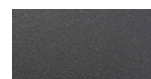
To increase uptime, an external status light lets you and your staff know at a glance the operating condition of your treadmill and when to perform life-extending maintenance.



Refined colourways with dark Tungsten covers and two frame colour options, Black Pearl and Storm Grey.



Black Pearl



Storm Grey



Specifications

Dimensions (L x W x H): 83 x 35 x 68.5 in / 211 x 89 x 174 cm

Equipment Weight: 405 lb / 185 kg

Step-Up Height: 9.5 in / 24 cm

Handrail Length: 18 in / 46 cm

Running surface: 60 x 22 in / 153 x 56 cm

Power: 220/240 volt

Applicable country-specific power cord is supported*

Total Workouts: 27

Elevation Range: 0% to 15% incline in 0.5% increments

Speed Range: 0.5-12 mph / 0.8-19.2 km/h

Motor Drive: 4 high-efficiency AC-motor (8 HP peak)

Language: English, Danish, Dutch, French, Finnish, German, Italian, Japanese, Korean, Norwegian, Polish, Portuguese, Russian, Simplified Chinese, Spanish, Swedish, Traditional Chinese, Turkish

Network Capabilities: Preva® network capable

Entertainment: 10 in / 25.4 cm LCD Capacitive Touch Screen
Mobile Device Charger and Audio Jack

Accessories: Integrated Reading Rack
Optional - Cable Management

Warranty: Visit www.precor.com for warranty terms.

* Contact your local Precor representative for further information